

## From requirements to design

# Visure Requirements Integration with Sparx Systems Enterprise Architect

## Challenges



### Need to track appliances in the different phases of the life cycle.

The integration between Visure Requirements and Enterprise Architect allows to track requirements down to design, and from there to the source code. The integration helps users establish and maintain traceability throughout the requirements lifecycle.



### Lack of clear and transparent traceability reports.

The information meta model in Visure Requirements allows to represent Use Cases and their relationships coming from Enterprise Architect inside Visure Requirements, along with requirements and test cases, to be able to perform an end-to-end change impact analysis. This end-to-end traceability allows users perform reliable change impact analysis.

## ABC

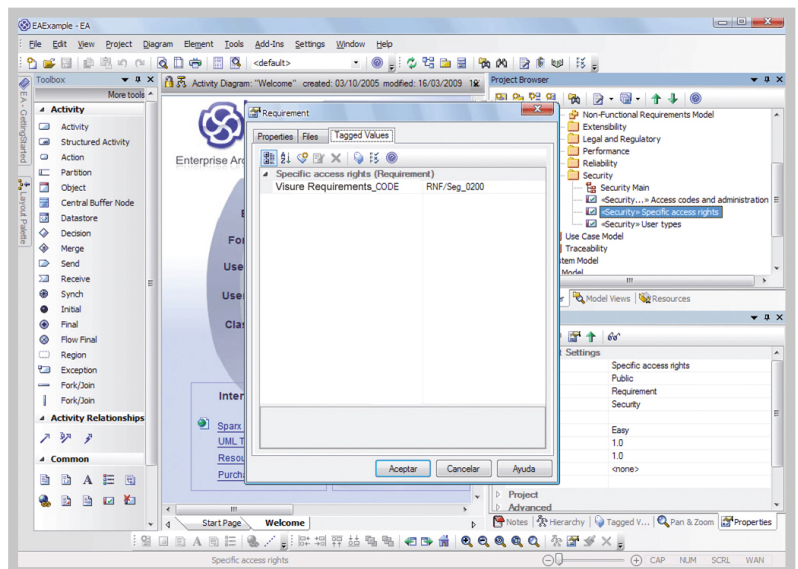
### The requirements are expressed only as text.

Visure Requirements provides the capability to express requirements not only as text, but also as high level use cases, which can then be taken to Enterprise Architect as the basis for design.

## The integration - Key Features

### ■ Bidirectional synchronization of:





- Requirements & detailed Requirements
- Use Cases, Test Cases, Change Requests
- Traceability between Requirements
- Traceability between Requirements and other items



## Visure Requirements Integration with Sparx Systems Enterprise Architect

	Visure Requirements to Sparx Systems Enterprise Architect	Sparx Systems Enterprise Architect to Visure Requirements
<b>Requirements</b>		
Requirements synchronization (code, name, description, attributes)	✓	✓
Requirements hierarchy	✓	✓
Traceability between requirements	✓	✓
Traceability between requirements and existing requirements in destination tool	✓	✓
Traceability motives and direction	✓	✓
Traceability between requirements and existing use cases in destination tool	✓	✓

### What the integration helps to achieve

-  Carry out impact analysis and change prioritization
-  Communicate requirements throughout the life cycle
-  Capture exact and complete requirements
-  Specify and document requirements understandably